

MASSED PLANTING BEDS
PROPOSED PATHWAY
14 HA
6 BL
LARGE FE
PROPOS

COLOURS FOR CONCRETE

COLOUR SELECTOR

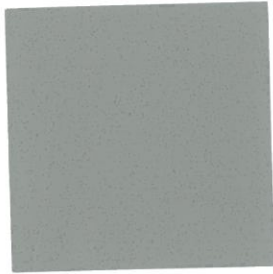
colourmix



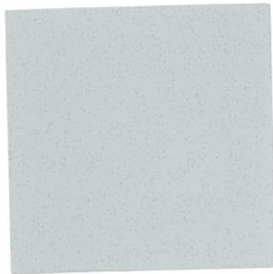
turn your concepts into reality...



www.colourmix.com.au



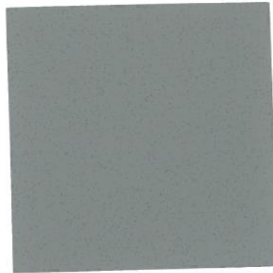
Silver (1)



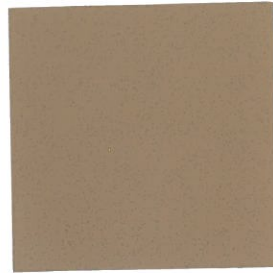
Arctic (2)



Limestone (2)



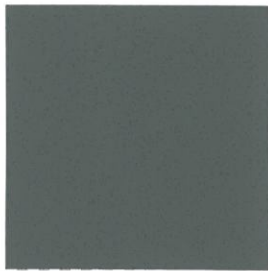
Platinum (1)



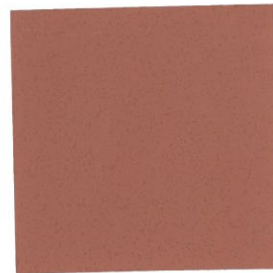
Ginger (1)



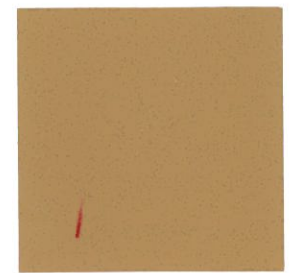
Cargo (1)



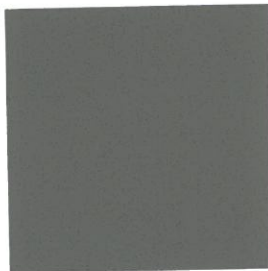
Bluestone (1)



Colonial Red (1)



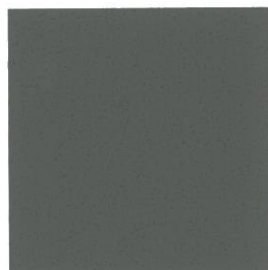
Sandstone (1)



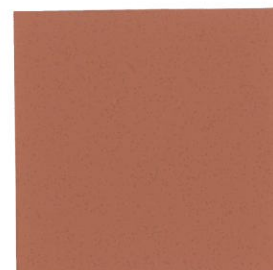
Charcoal (1)



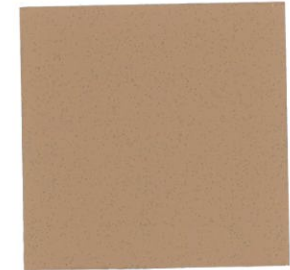
Suede (1)



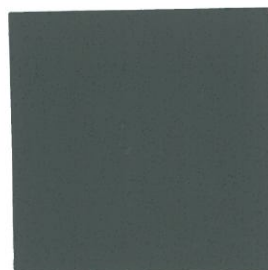
Jet Black (2)



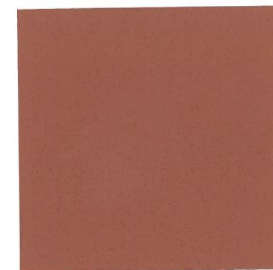
Vesuvius (1)



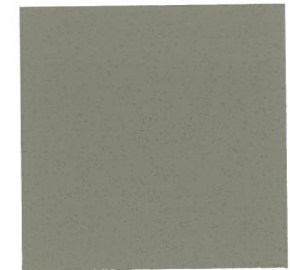
Cappuccino (1)



Black Velvet (2)



Desert Red (2)



Mangrove (1)



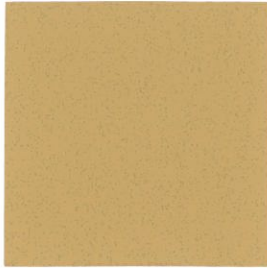
Fremantle (1)



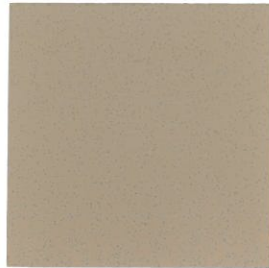
Soapstone (1)



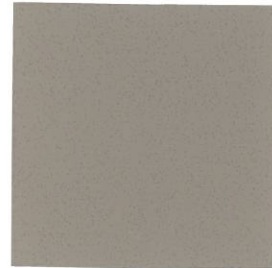
Pumice (1)



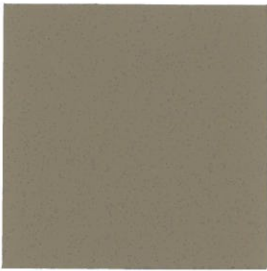
Turmeric (1)



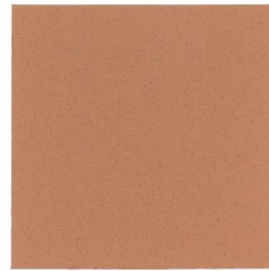
Papyrus (1)



Flint (1)



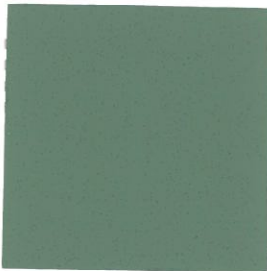
Taupe (1)



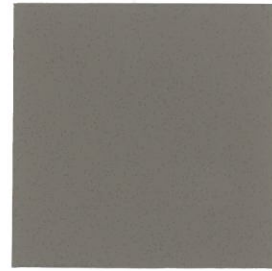
Spice (1)



Sepia (1)



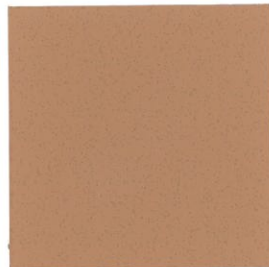
Marl (2)



Peppercorn (1)



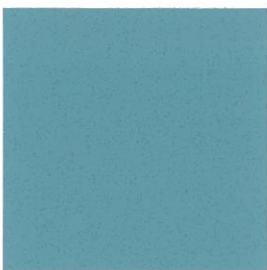
Monsoon (1)



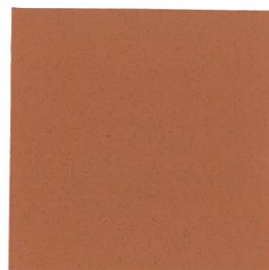
Pumpkin (1)



Thistle (1)



Atlantic (1)



Terracotta (2)



Bronze (1)

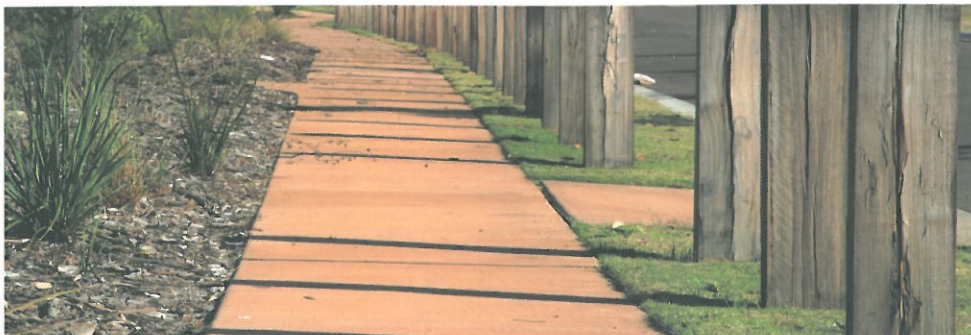
Colour dose based on addition to 25-32MPa Grey Concrete.

(1) 1 x 10kg bag per cubic metre

(2) 2 x 10kg bags per cubic metre

COLOUR SELECTOR





Benefits of Colourmix

- // Manufactured by Cathay Industries a leading manufacturer and supplier of high quality synthetic pigment oxides for the building and construction industry worldwide.
- // UV and alkali stable, non-fading, weather resistant & insoluble in water. Pigments easily disperse in concrete.
- // Packaging is designed to be safer to the user by reducing lift weights, reducing handling requirements & eliminating dust exposure.
- // Manufactured under a strict quality control regime by an ISO9001 quality accredited company. Reliable pigment colour: batch to batch, day to day, year to year.
- // Do not contain pigments or ingredients considered unsuitable for use in concrete and cementitious applications.
- // Unparalleled technical support and customer service.

Specifying a Colour

When specifying a colour simply select a colour from the Colourmix Colour Selector overleaf. All colours shown overleaf are based on grey cement. Identify your required concrete strength (MPa). For a detailed specification to incorporate into tender documents please contact a member of our sales team.

Addition Rates

For concrete strengths of 25MPa to 32MPa the addition rates shown of 1 or 2 bags of Colourmix per cubic metre of concrete should be applied. For higher strength concretes, or where coloured concretes of different strengths are to be placed adjacent to one another, Cathay Industries should be contacted to recommend appropriate addition rates.

Finishing

Concrete integrally coloured with Colourmix pigments can be finished using a variety of conventional methods. Whether this be a broom, honed, etched, stamped or exposed finish it is important that consistent finishing practices are employed. Concrete slump, raw materials, curing conditions and curing techniques should also remain constant in order to achieve a more uniform result. Consideration should be given to using contractors who are experienced in placing and finishing coloured concrete.

Packaging

Colourmix colours are supplied as standard in our cold-water soluble "Aquasac" bags. Our Aquasac bags are made from the highest quality soluble film and they are the only universal packaging recommended for all concrete mix designs and finishes. Aquasac bags are ideal for even the most demanding concrete finishes including exposed, etched, honed and polished finishes.



Cathay Industries (Australasia) Pty Ltd

Melb (VIC, SA, TAS, WA) (03) 8787 4400
 Sydney (NSW, ACT) (02) 9336 1000
 Brisbane (NT, QLD) (07) 3387 0128



Internet

Visit the Colourmix website for inspiration, colours, photo examples and useful industry links: www.colourmix.com.au

Whilst we have taken every effort to produce a brochure that best represents concrete coloured with Colourmix colours, we can not guarantee the colour of the final product. The colours shown in this brochure together with any samples or displays of Colourmix colours should be used as a guide to what may be achieved. All concrete colours are influenced by a number of factors including the concrete raw materials (notably cement, aggregates and sands can vary significantly with location), moisture content, curing, finishing techniques and weather conditions that are not under our control and that we can not guarantee. For projects where colour is critical we strongly recommend obtaining or placing representative concrete samples from your concrete supplier, precastor or concrete product manufacturer. We recommend using contractors experienced in placing and finishing coloured concrete and viewing local examples of their work. All information is offered without warranty, representation, inducement or licence and Cathay Industries does not assume legal responsibility for reliance upon the same.